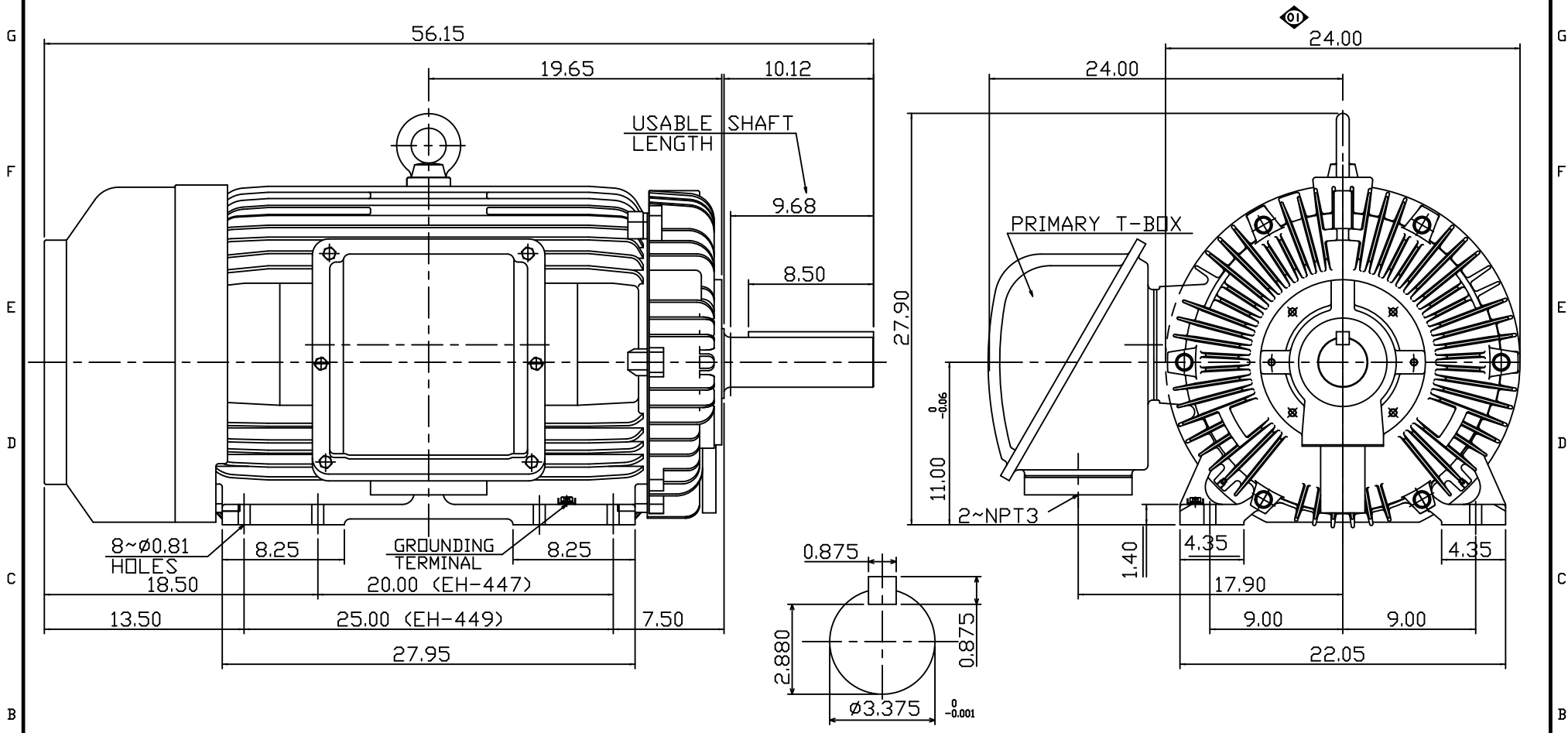


11 10 9 8 7 6 5 4 3 2 1

POLE	HP	kW	Hz	VOLT	r/min(RPM)	INS	RATING	DIMENSION IN	APPROX WEIGHT	BEARINGS
4	350	261	60	460	1800	F	CONT.	INCH	3290 LBS.	DE:NU320 NDE:6316



- NOTE:
1. DIMENSIONS IN INCHES
  2. FRAME NO. 449TZ
  3. F CLASS INSULATION, S.F.1.15
  4. FOR BELT SERVICE
  5. ENCLOSURE: IP55
  6. WITH THERMISTOR: PTC 140°C 3PCS
  7. SHAFT MATERIAL: SCM440 Q&T (AISI 4140 EQUIV)
  8. CORROSION PROOF

OUTLINE DIMENSIONS			
3-PHASE INDUCTION MOTOR			
MOTOR TYPE	AEHGD	FRAME NO.	449TZ
CATALOG NO.	CDP3504TR	DATE	02-01-2018
TEC Westinghouse			DWG NO. 31057G020271
DWG.	C.COOK	02-01-18	

11 10 9 8 7 6 5 4 3 2 1